

DIGITUS[®] CAT 5e Patch Panel, unshielded



DN-91548U

✓ Category: 5e

✓ Unshielded

✓ Available as 24- and 48-port version

✓ Color black (RAL 9005)

Abstract

DIGITUS[®] CAT 5e Patch Panel, unshielded, rack mount, color black (RAL 9005), 48- or 24-port

Features

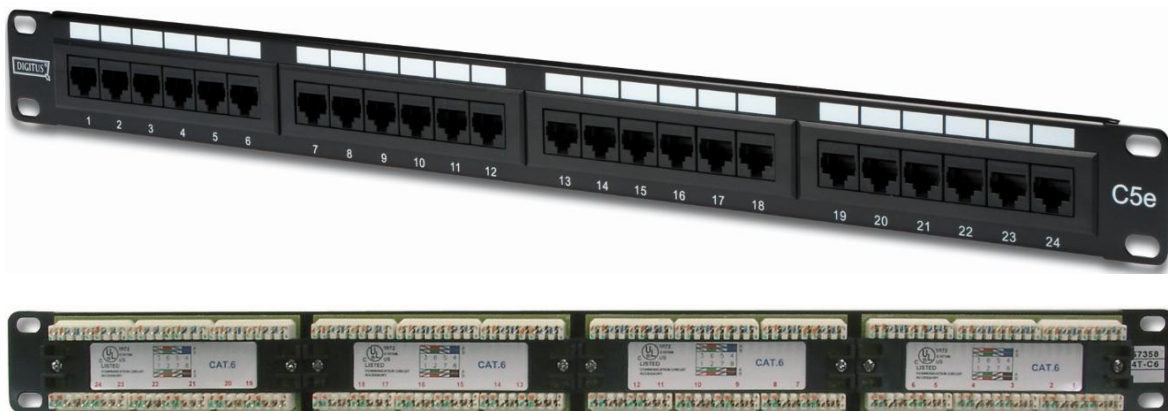
- ISO/IEC 11801 and EN 50173
- RJ45 jacks, 8P8C
- Material housing: SECC, 1.5 mm galvanized, cold-rolled Steel acc. EN1.4301
- Cable installation via LSA strips, color coded acc. EIA/TIA 568 A&B
- Fixing option for cable ties, central ground connection
- Suitable for 483 mm (19") rack mount
- Available as 24-port (1U) and 48-port (2U) version

Product Overview

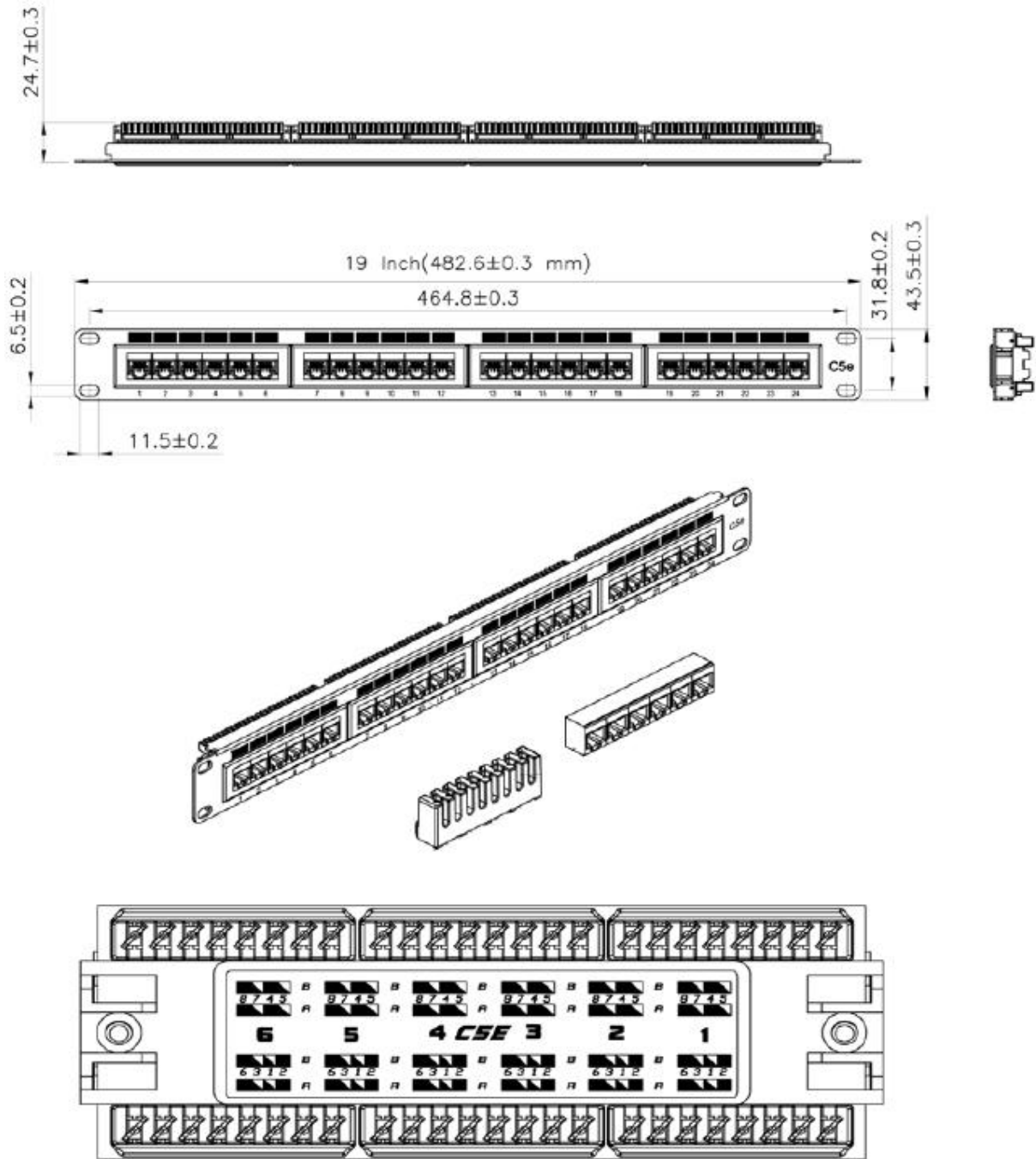
The unshielded CAT 5e Patch Panel from DIGITUS[®] is available as 24-port (1 height unit) or 48-port version (2 height units). The housing is made of 1.5 mm galvanized, cold-rolled steel and is therefore perfectly suitable for 19" rack mounting.

Product Images

DN-91524U



Technical Drawings



Product Number Information

- DN-91524U DIGITUS[®] CAT 5e Patch Panel, unshielded, 24-port RJ45, 8P8C, LSA, 1U, rack mount, color black (RAL 9005)
- DN-91548U DIGITUS[®] CAT 5e Patch Panel, unshielded, 48-port RJ45, 8P8C, LSA, 2U, rack mount, color black (RAL 9005)

Product Number Information - Accessories

- DN-LSA-PT DIGITUS[®] LSA Punch Down Tool
- DN-94014 DIGITUS[®] Pliers, cutting area 0.7 mm hole, for precise and easy cutting, compact design, with ergonomic handle (yellow)
- DN-94015 DIGITUS[®] Cutter & Stripper, 5" electrical cutter & stripper for flush cutting, size 20-24 AWG
- DN-CT-10M-20 Velcro Tape, 20 mm wide, for structured cabling, 10 m roll, color black